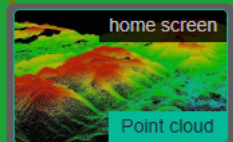


**LiShare**

[www.greenvalleyintl.com](http://www.greenvalleyintl.com)



# LiSHARE CLOUD SERVICE



**MANAGE**

**ASSETS**

**ANYTIME,**

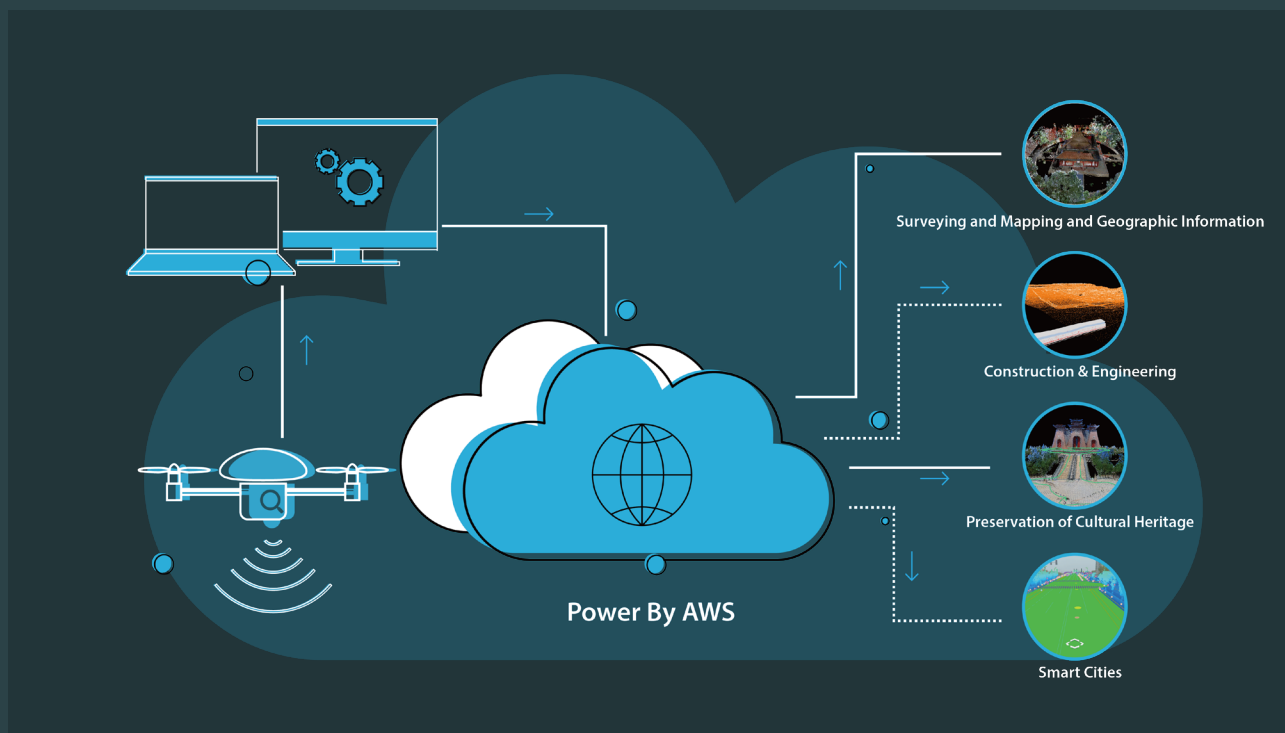
**ANYWHERE**

*LISHARE CLOUD SERVICE*

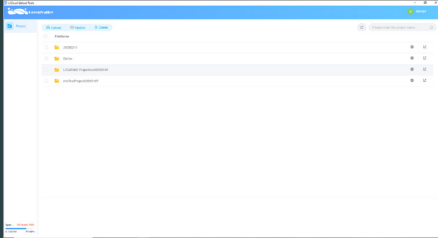


# LiShare Cloud Service CLOUD-BASED 3D DATA MANAGEMENT

LiShare Cloud Service is a cloud-based 3D data management, analysis and visualization platform designed for architecture, engineering, surveying and mapping, cultural heritage protection and other fields. Through the platform, users can easily upload, manage, analyze, and share data such as point clouds, models, and panoramas to achieve efficient 3D scene display and collaboration.

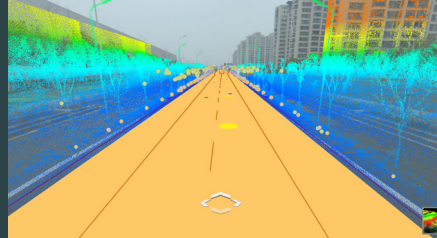


# Core Functions



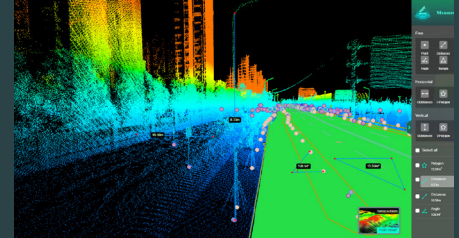
## Step1: Data Upload and Storage

- Cloud storage with batch upload support
- Automatic processing of point cloud, vector, and model data



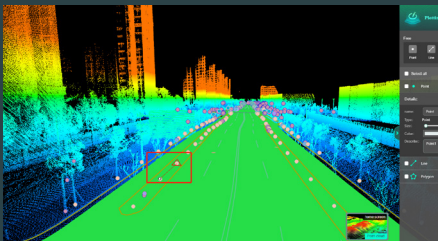
## Step2: Online Point Cloud Browsing

- Support LAS, Lidata, PLY, gpkg, OBJ, JPG/PNG
- High-precision 3D browsing with smooth visualization of large-scale point clouds, no download required



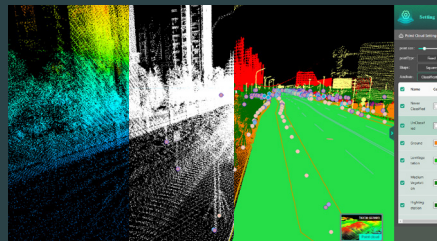
## Step3: Measurement Tools

- Provide 3D measurement tools for distance, area, and angle analysis



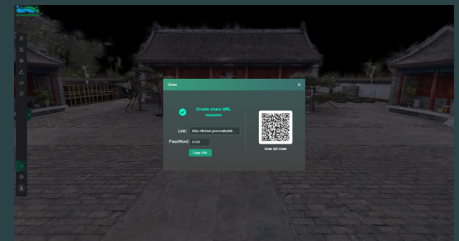
## Step4: Custom Annotations

- Add annotations, layers, and attribute information
- Right-side panel generates lists for management, analysis, and report generation



## Step5: Rendering Settings

- Adjust point cloud size, color, fill, rendering (height, type, intensity, RGB, tree ID, echo, etc.)
- Support EDL, background color, and custom window settings



## Step6: Data Sharing and Collaboration

- Generate encrypted sharing links
- Support multi-user collaborative viewing and analysis

# Technical Highlights

---



## High-end has no shortcomings

Advanced point cloud rendering technology is used to realize real-time loading and smooth interaction of large-scale data.

---



## Somatosensory leading

It accesses PCs, tablets, and mobile phones, supports all dataformats from GreenValleyPC software, and features built-inmulti-user collaboration.

---

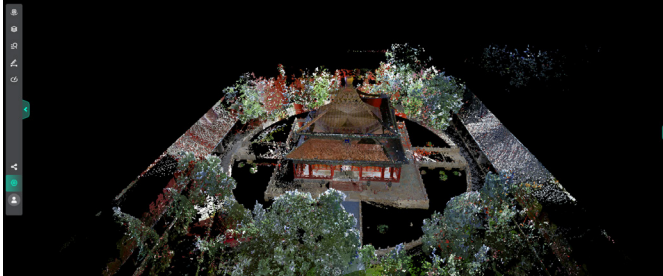


## Safety and Security

End-to-end encryption ensures strict data privacy and system security.

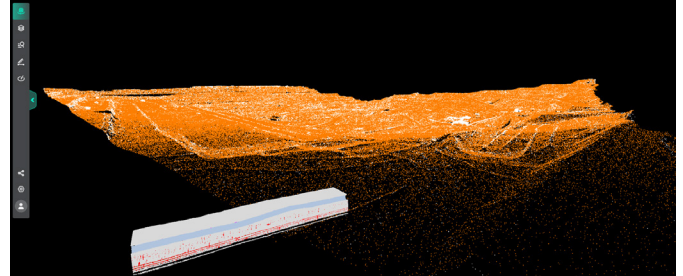


# Application



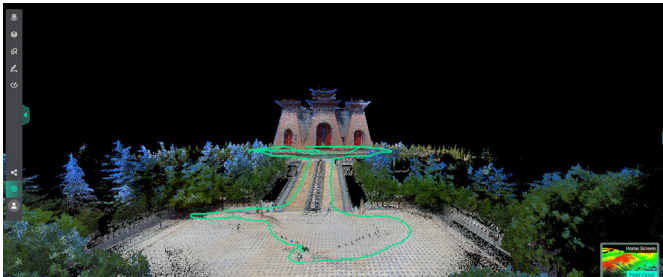
## Surveying and Mapping and Geographic Information

Support topographic mapping, urban modeling and other applications to generate high-precision 3D maps.



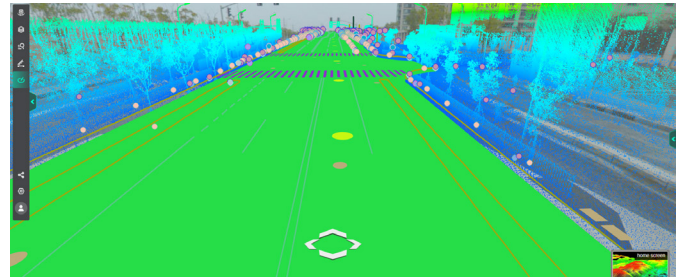
## Construction & Engineering

Construction & Engineering is used for 3D modeling and schedule management of construction sites, bridges, tunnels and other engineering projects.



## Preservation of Cultural Heritage

3D scanning and modeling of historical buildings and cultural relics for protection and restoration.

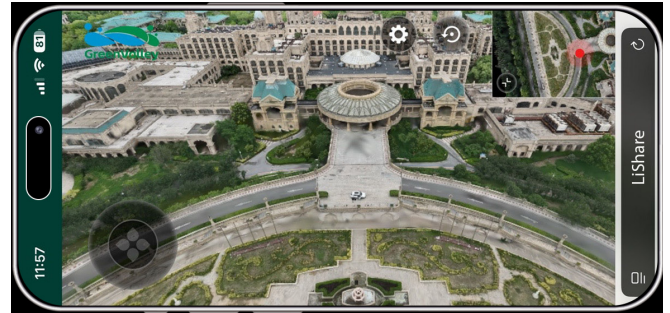


## Smart Cities

Provide 3D data support for urban planning, traffic management, environmental monitoring, etc.



Optimized for ultra-large-scale scenes, supporting real-time loading and rendering of billion-level Gaussian model data.  
Dynamic LOD strategy for intelligent data detail scheduling.  
Ensures smooth and lag-free browsing from global overview to local details.



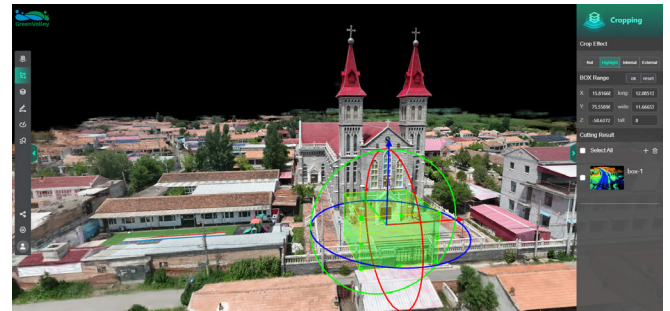
**Immersive 3D Browsing:** Load high-quality 3DGS scenes for a photorealistic visual experience

**Realistic Physical Collisions:** Built-in collision detection for authentic, immersive movement exploration

**One-Click Return to Spawn:** Lost or want to restart? Instantly return to the initial viewpoint with one click



A powerful 3DGS measurement tool. It allows accurate distance, area, and angle measurements within photorealistic real-world 3D scene models, enabling users to obtain real-world spatial data directly in the browser—intuitive and efficient.



Easily clip point clouds and 3DGS models using intuitive bounding box selection or cross-section drawing, precisely excluding irrelevant areas to quickly reveal internal structures or isolate specific targets. This provides robust support for subsequent measurement, analysis, and presentation.



---

[www.greenvalleyintl.com](http://www.greenvalleyintl.com)   [info@greenvalleyintl.com](mailto:info@greenvalleyintl.com)

729 Heinz Avenue, Suite 9, Berkeley, CA 94710, USA

---